

JAZZ BAND SERIES

Belwin JAZZ
a division of Alfred

Alianza

ERIK MORALES

INSTRUMENTATION

Conductor	1st Trombone
1st E \flat Alto Saxophone	2nd Trombone
2nd E \flat Alto Saxophone	3rd Trombone
1st B \flat Tenor Saxophone	Bass Trombone
2nd B \flat Tenor Saxophone	Guitar Chords
E \flat Baritone Saxophone	Guitar
1st B \flat Trumpet	Piano
2nd B \flat Trumpet	Bass
3rd B \flat Trumpet	Drums
4th B \flat Trumpet	

Optional Alternate Parts

Auxiliary Percussion (Cowbell, Conga)
C Flute
Tuba
Horn in F (Doubles 1st Trombone)
1st Baritone T.C./B \flat Tenor Saxophone (Doubles 1st Trombone)
2nd Baritone T.C./B \flat Tenor Saxophone (Doubles 2nd Trombone)
3rd Baritone T.C./B \flat Tenor Saxophone (Doubles 3rd Trombone)

NOTES TO THE CONDUCTOR

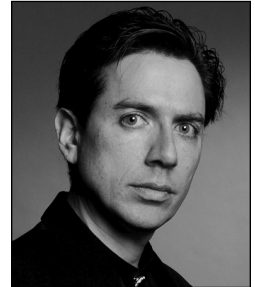
“Alianza” is the Spanish word for alliance. Here, the alliance is represented through the blending of Latin and swing styles. The main melody seamlessly integrates the two styles.

Perhaps the most challenging aspect of this work will be the rhythm section’s ability to switch between the two styles smoothly. The piano part switches between swing-style comping and the Latin montuno phrases. In general, the upbeats of the montuno rhythm should always be played staccato.

Although there is only one solo by 2nd trumpet at measure 63, every section of the band is featured at some point. This chart works best with two extra percussionists. If only one is available, another option is for the director to play the cowbell part.

Enjoy!

—*Erik Morales*



**Erik
Morales**

Erik Morales began his composing career shortly after graduation from high school in south Florida. He studied composition at Florida International University, and completed his bachelor’s degree at the University of Louisiana at Lafayette. Accessible at all levels, the music of Erik Morales has a unique melodic and harmonic vocabulary that appeals to audiences worldwide. His published works encompass a large variety of styles and settings, including works for concert, orchestral, jazz and chamber ensembles and have been part of featured performances across the globe. Mr. Morales currently teaches and plays trumpet professionally in the New Orleans area, in addition to maintaining an active composing and conducting schedule.

CONDUCTOR
29794S

LATIN GAZZ $\text{♩} = 120$

ALIANZA

By ERIK MORALES (ASCAP)

1st E♭ ALTO SAXOPHONE
2ND E♭ ALTO SAXOPHONE
1st B♭ TENOR SAXOPHONE
2ND B♭ TENOR SAXOPHONE
E♭ BARITONE SAXOPHONE
1st B♭ TRUMPET
2ND B♭ TRUMPET
3RD B♭ TRUMPET
4TH B♭ TRUMPET
1st TROMBONE
2ND TROMBONE
3RD TROMBONE
BASS TROMBONE
GUITAR
PIANO
BASS
DRUMS

AS WRITTEN
CHOIRS APPEAR IN PARTS AS NEEDED

3 4 5 6 7 8

ALTO 1

ALTO 2

TENOR 1

TENOR 2

SARI.

TPT. 1

TPT. 2

TPT. 3

TPT. 4

TBN. 1

TBN. 2

TBN. 3

BASS TBN.

GTR.

PNO.

BASS

DRUMS

N.B.

N.B.

N.B.

N.B.

C#m7

G7(b9)

A#m7

D#m7

C#m7

F7

Bbm7

E7

A7

G7(b9)

C#m7

Bbm7

E7

C#m7 comp

Bbm7

FILL

LATINI

2

SWING!

9

10

11

12

13

14

15

16

17

18

ALTO 1

ALTO 2

TENOR 1

TENOR 2

SARI.

TPT. 1

TPT. 2

TPT. 3

TPT. 4

TBN. 1

TBN. 2

TBN. 3

BASS TBN.

GTR.

PNO.

BASS

DRUMS

29 30 31 32 33 34 35 36 37 38

CHORDS: Cm7, F7, Bbm7, Eb7, Ab7, G7(b9), Cm7, Bbm7, Eb7, Abmaj7, D9(b9), G7sus4, G7(b9)

DRUMS: LATIN!, SWING!

AS WEITEN

Legal Use Requires Purchase

ALTO 1

ALTO 2

TENOR 1

TENOR 2

BARI.

TPT. 1

TPT. 2

TPT. 3

TPT. 4

TBN. 1

TBN. 2

TBN. 3

BASS TBN.

GTR.

PNO.

BASS

DRUMS

49 50 51 52 53 54 55 56 57 58

Legal Use

Requires Purchase

Preview Only

67

ALTO 1

ALTO 2

TENOR 1

TENOR 2

BARI.

TPT. 1

TPT. 2

TPT. 3

TPT. 4

TBN. 1

TBN. 2

TBN. 3

BASS TBN.

GTR.

PNO.

BASS

DRUMS

67

A(#5)

SOLO

E(b9)

Dui

A(#5)

E(b) D(b) Cui D(b) D(b9) G(#5) D(b9)

Cui TPT. SOLO COMP IF NO PIANO G(#5)

Cui COMP G(#5)

MÉ LATINI

59 60 61 62 63 64 65 66 67 68

ALTO 1

ALTO 2

TENOR 1

TENOR 2

SARI.

TPT. 1

TPT. 2

TPT. 3

TPT. 4

TBN. 1

TBN. 2

TBN. 3

BASS TBN.

GTR.

PNO.

BASS

DRUMS

69 70 71 72 73 74 75 76 77 78

Legal Use Requires Purchase

85

ALTO 1

ALTO 2

TENOR 1

TENOR 2

SARI.

TPT. 1

TPT. 2

TPT. 3

TPT. 4

TBN. 1

TBN. 2

TBN. 3

BASS TBN.

GTR.

PNO.

BASS

DRUMS

79 80 81 82 83 84 85 86 87 88

AS WEITEN

Legal Use Requires Purchase

Preview Only

Chord symbols: A7sus4, Dmi(m7), Ebmaj9, Dmi7, G7, Cmi7, F7, Bb7, Eb, Dmi7, G7, Cmi7, F7, G7sus4, Cmi(m7), Dbmaj9, Cmi7, F7, Bbm7, Eb7, Ab7, Db, Cmi7, F7, Bbm7, Eb7.

ALTO 1

ALTO 2

TENOR 1

TENOR 2

SARI.

TPT. 1

TPT. 2

TPT. 3

TPT. 4

TBN. 1

TBN. 2

TBN. 3

BASS TBN.

GTR.

PNO.

BASS

DRUMS

89 90 91 92 93 94 95 96 97 98

Chords: Bb7, A(#5), Dmi7, Cm7, F7, Bbmaj7, Eb9, A7sus4, Eb9, Dmi6, Eb9, Ab7, G(#5), Cm7, Bbmaj7, Eb7, Abmaj7, D9, G7sus4, D9, Cm6, D9, Cm7 comp, Bbmaj7, Eb7, Abmaj7, D9, AS WEITEN, bB, Eb, Ab, Ab7, Abmaj7, D9, Cm6, D9, SWING!, EUM, LATINI

99 107

ALTO 1

ALTO 2

TENOR 1

TENOR 2

SARI.

TRP. 1

TRP. 2

TRP. 3

TRP. 4

TEN. 1

TEN. 2

TEN. 3

BASS TEN.

GTR.

PNO.

BASS

DRUMS

SWING!

LATINI

99 100 101 102 103 104 105 106 107 108

Legal Use Requires Purchase

ALTO 1

ALTO 2

TENOR 1

TENOR 2

BARI.

TRP. 1

TRP. 2

TRP. 3

TRP. 4

TBN. 1

TBN. 2

TBN. 3

BASS TBN.

GTR. *Am7* *D7* *Gm7* *C7* *Fm7* *G(9)*

PNO.

BASS

DRUMS

109 110 111 112 113 114 115 116 117 118

115

ALTO 1

ALTO 2

TENOR 1

TENOR 2

BARI.

TPT. 1

TPT. 2

TPT. 3

TPT. 4

TBN. 1

TBN. 2

TBN. 3

BASS TBN.

GTR.

PNO.

BASS

DRUMS

119 120 121 122 123 124 125 126 127 128

Legal Use Only Preview Requires Purchase

CHIT PLAY IF NO PIANO

SOLO

Dmi7(b9)

G7

Cmi

131

ALTO 1

ALTO 2

TENOR 1

TENOR 2

SARI.

TPT. 1

TPT. 2

TPT. 3

TPT. 4

TEN. 1

TEN. 2

TEN. 3

BASS TEN.

GTR.

PNO.

BASS

DRUMS

UNISON

UNISON

UNISON

UNISON

END SOLO

Dmi7(b9)

G7

Cwi

Dmi7(b9)

G7

Cwi

Dmi7(b9)

G7

139

ALTO 1

ALTO 2

TENOR 1

TENOR 2

BARI.

TRP. 1

TRP. 2

TRP. 3

TRP. 4

TEN. 1

TEN. 2

TEN. 3

BASS TEN.

GTR.

PNO.

BASS

DRUMS

147

Legal Use Only

Requires Purchase

View Only

139 140 141 142 143 144 145 146 147 148

Swing!

Chords: Cmi, Dmi7(b9), G7, Cmi, Dmi7(b9), G7, Cmi7 ALWAYS PLAY, Bbm7, Eb7

ALTO 1

ALTO 2

TENOR 1

TENOR 2

SARI.

TPT. 1

TPT. 2

TPT. 3

TPT. 4

TBN. 1

TBN. 2

TBN. 3

BASS TBN.

GTR.

PNO.

BASS

DRUMS

149 150 151 152 153 154 155 156 157 158

Legal Use Requires Purchase

N.B.

155

ALL

ALTO 1

ALTO 2

TENOR 1

TENOR 2

SARI.

TPT. 1

TPT. 2

TPT. 3

TPT. 4

TBN. 1

TBN. 2

TBN. 3

BASS TBN.

GTR.

PNO.

BASS

DRUMS

167

CH17 F7 Bb17 Eb7 Ab7 G7(F#) CH17 Bb17 Eb7 Ab17ac7 D#13 F#17 Bb7

CH17 Bb17 Eb7 Ab17ac7 D#13 F#17 Bb7

SWING!

159 160 161 162 163 164 165 166 167 168

ALTO 1

ALTO 2

TENOR 1

TENOR 2

SARI.

TPT. 1

TPT. 2

TPT. 3

TPT. 4

TBN. 1

TBN. 2

TBN. 3

BASS TBN.

GTR.

PNO.

BASS

DRUMS

169 170 171 172 173 174 175 176 177

Legal Use Requires Purchase

The image shows a page of a musical score for a conductor, page 18 of the work 'ALIANZA'. The score is arranged in a standard orchestral layout with multiple staves. At the top, it is labeled 'CONDUCTOR' on the left, '- 18 -' in the center, and 'ALIANZA' on the right. The staves are labeled as follows: ALTO 1, ALTO 2, TENOR 1, TENOR 2, SARI. (Soprano), TPT. 1, TPT. 2, TPT. 3, TPT. 4, TBN. 1, TBN. 2, TBN. 3, BASS TBN., GTR. (Guitar), PNO. (Piano), BASS, and DRUMS. The score includes various musical notations such as notes, rests, and dynamic markings. A large, diagonal red watermark with the text 'Legal Use Requires Purchase' is overlaid across the center of the page. At the bottom of the page, measure numbers 169 through 177 are indicated.

Musical score for CONDUCTOR, featuring vocal and instrumental parts. The score includes staves for ALTO 1, ALTO 2, TENOR 1, TENOR 2, BARI., TRUMPET 1-4, TENOR 1-3, BASS TENOR, GTR., PNO., BASS, and DRUMS. The score is marked with measure numbers 178 through 186. A large red watermark "Preview Only - Legal Use Requires Purchase" is overlaid on the score.

Chord symbols for GTR. and PNO. parts:

- 178: D⁹, G(#5)
- 183: G7(b9) F7(#5) G7(b9) F7(#5)G7(b9)

Measure numbers: 178, 179, 180, 181, 182, 183, 184, 185, 186

Musical score for conductor, featuring vocal parts (Alto 1, Alto 2, Tenor 1, Tenor 2, Soprano), brass (Trumpet 1-4, Trombone 1-3, Bass Trombone), guitar, piano, bass, and drums. The score includes a large red watermark reading "Preview Only" and "Legal Use Requires Purchase".

Instrument parts include:
ALTO 1
ALTO 2
TENOR 1
TENOR 2
SARI.
TRP. 1
TRP. 2
TRP. 3
TRP. 4
TBN. 1
TBN. 2
TBN. 3
BASS TBN.
GTR.
PNO.
BASS
DRUMS

Chord symbols for guitar:
G7(b9) F7(#5) G7(b9) F7(b9)/G7(#5) Dm9 Bbm7 Eb7 Abmaj7 Dm9 Dm7(b9) Dm9

Measure numbers: 187, 188, 189, 190, 191, 192, 193, 194, 195

Drums: SOLO FILLS

Preview Only
Legal Use Requires Purchase



Preview Only
Legal Use Requires Purchase