

JAZZ BAND SERIES



Belwin JAZZ

a division of Alfred

JUST FRIENDS

Music by **JOHN KLENNER**
Lyrics by **SAM M. LEWIS**
Arranged by **JOE JACKSON**

INSTRUMENTATION

Conductor
1st E \flat Alto Saxophone
2nd E \flat Alto Saxophone
1st B \flat Tenor Saxophone
2nd B \flat Tenor Saxophone
E \flat Baritone Saxophone
1st B \flat Trumpet
2nd B \flat Trumpet
3rd B \flat Trumpet
4th B \flat Trumpet

1st Trombone
2nd Trombone
3rd Trombone
4th Trombone
Guitar Chords
Guitar
Piano
Bass
Drums

Optional Alternate Parts

C Flute (Optional)
Tuba (Optional)
Horn in F (Doubles
1st Trombone)
1st Baritone T.C. (Doubles
1st Trombone)
2nd Baritone T.C. (Doubles
2nd Trombone)
3rd Baritone T.C. (Doubles
3rd Trombone)



Preview Only
Legal Use Requires Purchase

CONDUCTOR
JEM01044C

JUST FRIENDS

Music by JOHN KLENNER
Lyric by SAM M. LEWIS
Arranged by JOE JACKSON

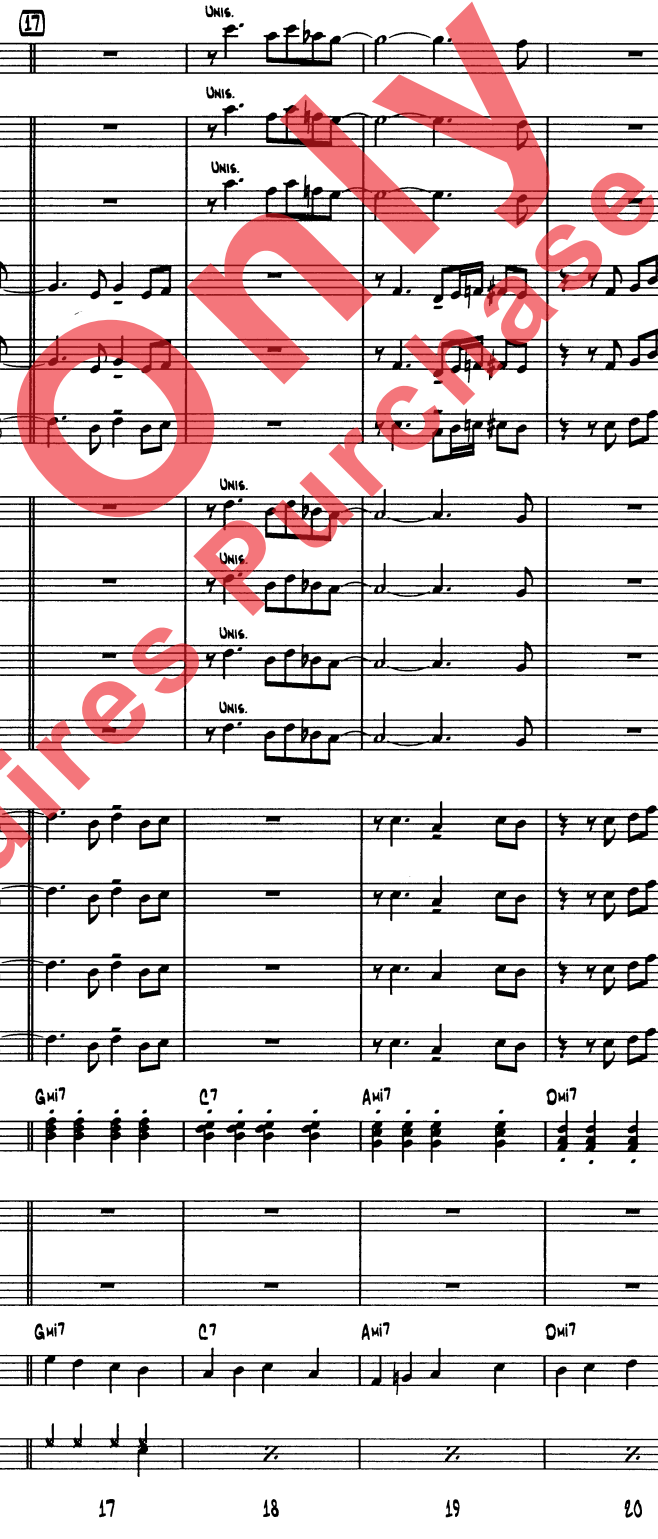
Sheet music for various instruments including C Flute, Saxophones (Alto, Tenor, Baritone), Trumpets (1st-4th), Trombones (1st-4th), Guitar, Piano, Bass, and Drums. The score includes a large red watermark: "Preview Requires Purchase".

Tempo: $\text{♩} = 116$

Measure numbers 1 through 9 are indicated at the bottom of the page.

Annotations for Guitar and Piano:

- 8+7
- B^b7
- (COUNT BASIE/FREDDY GREEN STYLE)
- (SPARSE BASIE-STYLE FILLS)
- B^b7
- B^b7
- B^b7
- B^b7
- E7
- (VERY TIGHT HIGH HAT BUMPER NOTES)
- (SHARE RIM OF CYMBAL STANO ON 4)



Musical score for 'Just Friends' featuring vocal and instrumental parts. The score includes parts for Flute (FL.), Alto 1, Alto 2, Tenor 1, Tenor 2, Baritone (BARI.), Trumpet 1-4 (TPT. 1-4), Trombone 1-4 (TBN. 1-4), Guitar (GTR.), Piano (PNO.), Bass, and Drums. The music is in the key of D major and 4/4 time. A conductor's part for 'CONDUCTOR - 2' is positioned at the top center, with a circled measure number '17' above it. The vocal parts include 'UNIS.' markings. The piano accompaniment includes chord symbols such as E7, F, A7b9, D7, G7, C7, and A7. The drums part shows a basic rhythmic pattern.

CONDUCTOR - 3

JUST FRIENDS

FL.

ALTO 1

ALTO 2

TENOR 1

TENOR 2

BARI.

TRP. 1

TRP. 2

TRP. 3

TRP. 4

TBN. 1

TBN. 2

TBN. 3

TBN. 4

GTR.

PNO.

BASS

DRUMS

22 23 24 25 26 27 28 29 30 31

Legal Music Requisites Purchases

The image displays a page of a musical score for the piece "Just Friends". At the top, it is labeled "CONDUCTOR - 3" and "JUST FRIENDS". The score is arranged in a standard orchestral format with multiple staves. The woodwind section includes Flute (FL.), two Alto saxophones (ALTO 1, ALTO 2), two Tenor saxophones (TENOR 1, TENOR 2), Baritone saxophone (BARI.), and four Trumpets (TRP. 1-4). The brass section consists of four Trombones (TBN. 1-4). The rhythm section includes Guitar (GTR.), Piano (PNO.), Bass, and Drums. The piano part is mostly silent. The guitar part features a series of chords: C7, B7, Bbm7, Bbm7, Eb7, Fm7, and Abm7. The bass line provides a steady accompaniment. The drum part includes a snare drum pattern with a specific instruction: "SIDE OF STICK ON SNARE RIM," and a double bass drum pattern. A large red watermark, "Legal Music Requisites Purchases", is overlaid diagonally across the entire page. The page number "25" is circled in the conductor part. Measure numbers 22 through 31 are indicated at the bottom of the page.

FL.

ALTO 1

ALTO 2

TENOR 1

TENOR 2

BARI.

TRP. 1

TRP. 2

TRP. 3

TRP. 4

TBN. 1

TBN. 2

TBN. 3

TBN. 4

GTR.

PNO.

BASS

DRUMS

33

41

32

33

34

35

36

37

38

39

40

41

42

CHORDS: D7, G#7, C7, A7, D#7, Bb7

DRUMS: SET UP, SOLO

MARKINGS: m², m² (STRONG KICKS, BUT KIT STAYS UP)

FL.

ALTO 1

ALTO 2

TENOR 1

TENOR 2

BARI.

TRP. 1

TRP. 2

TRP. 3

TRP. 4

TBN. 1

TBN. 2

TBN. 3

TBN. 4

GTR.

PNO.

BASS

DRUMS

43 44 45 46 47 48 49 50 51 52

8mi7 Eb7 Fmi7 D7 C7 B7 C7 A7(b9) Dmi7

8mi7 Eb7 Fmi7 D7 C7 B7 C7 A7(b9) Dmi7

FL.

ALTO 1

ALTO 2

TENOR 1

TENOR 2

BARI.

TRP. 1

TRP. 2

TRP. 3

TRP. 4

TBN. 1

TBN. 2

TBN. 3

TBN. 4

GTR.

PNO.

BASS

DRUMS

53 54 55 56 57 58 59 60 61 62 63

57

SOLO

Cmaj7

Cmi7

F7

G

Bmi7

G7

C7

F7

Bmi7

E7

F

Ami7

G7

C7

F7

Bmi7

E7

F

Ami7

Legal Use Requires Purchase

65 73

FL.

ALTO 1

ALTO 2

TENOR 1

TENOR 2

BARI.

TRP. 1

TRP. 2

TRP. 3

TRP. 4

TBN. 1

TBN. 2

TBN. 3

TBN. 4

GTR.

PNO.

BASS

DRUMS

64 65 66 67 68 69 70 71 72 73 74

Legal Use Only

Requires Purchase

SOLO

VERY TIGHT HIGH HAT QUARTER NOTES

SHAKE RIM OR CYMBAL STAND ON 4

FL.

ALTO 1

ALTO 2

TENOR 1

TENOR 2

BARI.

TPT. 1

TPT. 2

TPT. 3

TPT. 4

TBN. 1

TBN. 2

TBN. 3

TBN. 4

GRE.

PNO.

BASS

DRUMS

1ST TIME: 2
2ND TIME: 22

89

97

FL.

ALTO 1

ALTO 2

TENOR 1

TENOR 2

BARI.

TRP. 1

TRP. 2

TRP. 3

TRP. 4

TBN. 1

TBN. 2

TBN. 3

TBN. 4

GTR.

PNO.

BASS

DRUMS

FL.

ALTO 1

ALTO 2

TENOR 1

TENOR 2

BARI.

TRP. 1

TRP. 2

TRP. 3

TRP. 4

TBN. 1

TBN. 2

TBN. 3

TBN. 4

GR.

PNO.

BASS

DRUMS

1. 2.

SOLO - BRING IT WAY DOWN!

SOLO - MOLTO CRESCENDO!

BIG FILL

99 100 101 102 103 104 105 106 107 108 109 110

A7(b9) Dm7 Gm7 C7 F Bbm7 Bbm7

FL.

ALTO 1

ALTO 2

TENOR 1

TENOR 2

BARI.

TRP. 1

TRP. 2

TRP. 3

TRP. 4

TBN. 1

TBN. 2

TBN. 3

TBN. 4

GTR.

PNO.

BASS

DRUMS

111 112 113 114 115 116 117 118 119 120 121

(BIG FILL)

(SIDE OF STICK ON SNARE RIM)

FL.

ALTO 1

ALTO 2

TENOR 1

TENOR 2

BARI.

TPT. 1

TPT. 2

TPT. 3

TPT. 4

TBN. 1

TBN. 2

TBN. 3

TBN. 4

GTR.

PNO.

BASS

DRUMS

122 123 124 125 126 127 128 129 130 131 132

Chords: C7, G#m7, G#m7, G#m7, C7, Am7, D+7, D7, G#m7, C7, F, F#m7, C7, F, B#m7, G#m7, C7, Am7, D+7, D7, G#m7, C7, F, F#m7

Annotations: SOLO, BIG FILL, FILL

Preview Only
Legal Use Requires Purchase

Preview Only
Legal Use Requires Purchase



Alfred Publishing Co., Inc.
16320 Roscoe Blvd., Suite 100 • P.O. Box 10003
Van Nuys, CA 91410-0003
alfred.com